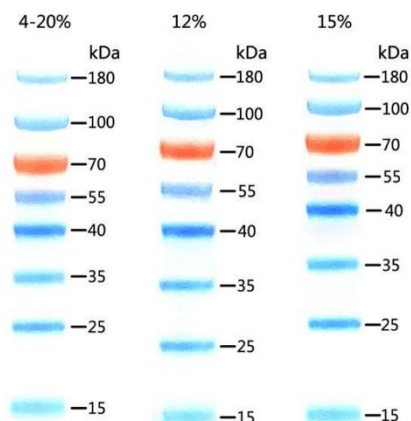


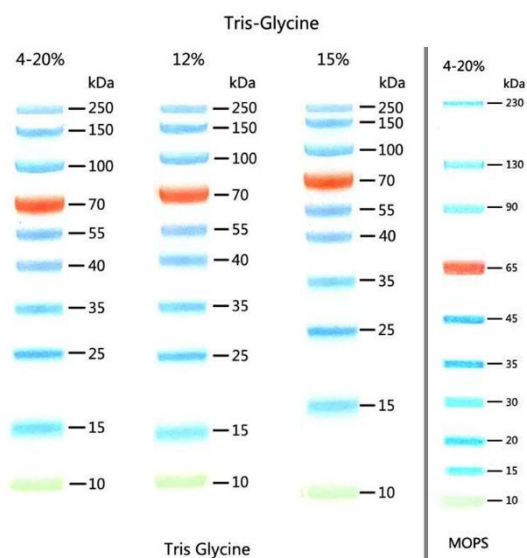
OXGEN™ PROTEIN MOLECULAR WEIGHT MARKER



15–180 kDa, 8 bands (Tris-Glycine)

LADD-PR2-250

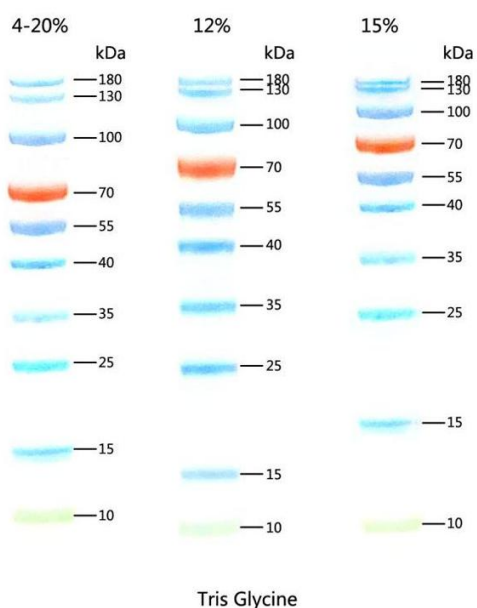
Contains 8 pre-stained standard proteins with known molecular weights, ranging from 15kDa to 180kDa (15, 25, 35, 40, 55, 70, 100, 180). The 70kDa band is marked orange, while the others are blue.



10–250 kDa, 10 bands (Tris-Glycine, MOPS)

LADD-PR3-250

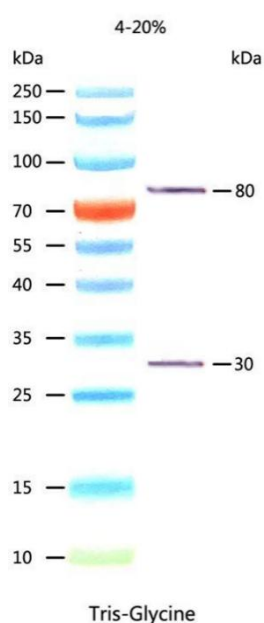
Contains 10 pre-stained standard proteins with known molecular weights, ranging from 10kDa to 250kDa (10, 15, 25, 35, 40, 55, 70, 100, 150, 250). The 70kDa band is marked orange, and the 10kDa band is marked green, while the others are blue.



10–180 kDa, 10 bands (Tris-Glycine)

LADD-PR4-250

Contains 10 pre-stained standard proteins with known molecular weights, ranging from 10kDa to 180kDa (10, 15, 25, 35, 40, 55, 70, 100, 130, 180). The 70kDa band is marked orange, and the 10kDa band is marked green, while the others are blue.



10–250 kDa, 12 bands (Tris-Glycine)

LADD-PR5-250

Contains 12 pre-stained standard proteins with known molecular weights, ranging from 10kDa to 250kDa. It includes 10 pre-stained protein bands (10, 15, 25, 35, 40, 55, 70, 100, 150, 250) and 2 unstained protein bands (30, 80). The 30kDa and 80kDa immunodetectable bands have IgG binding sites, which can be conjugated with antibodies and visualized during Western Blot development*.

Usage method

1. Allow the Marker to dissolve at room temperature or immerse it in a 37-40°C water bath for a few minutes to dissolve it; avoid high-temperature heating.
2. Gently vortex to ensure thorough mixing before proceeding with gel electrophoresis.
3. Generally, a sample volume of 5µl per application is sufficient; if performing transfer, use 2-5µl.

*Only for LADD-PR5-250

4. During the electrophoresis process, 10 pre-stained protein molecular weight standards are visible.
5. After transfer and antibody incubation, the 30kDa and 80kDa bands can be visualized on nitrocellulose or PVDF membranes.

Important notes

1. This marker should not be used for active protein electrophoresis to predict the size of protein molecular weights.
2. The covalent binding of protein to the chromophore will affect the protein's migration rate; therefore, the pre-stained protein marker can only be used for a rough estimation of the target protein's molecular weight size. Each batch of pre-stained protein molecular weight markers is calibrated relative to the unstained protein molecular weight Markers.

*Only for LADD-PR5-250

3. The intensity of the 30kDa and 80kDa immunodetectable bands depends on the concentration of the secondary antibody and the sensitivity of the substrate.
4. The 30kDa and 80kDa bands are visible after staining with Coomassie Brilliant Blue.

Storage

Stable at room temperature. For long term storage, store at -20 °C.

Product use limitation

This product is developed and sold exclusively for research purposes and use only. The product is not intended for diagnostics or drug development, nor is it suitable for administration for humans or animals.